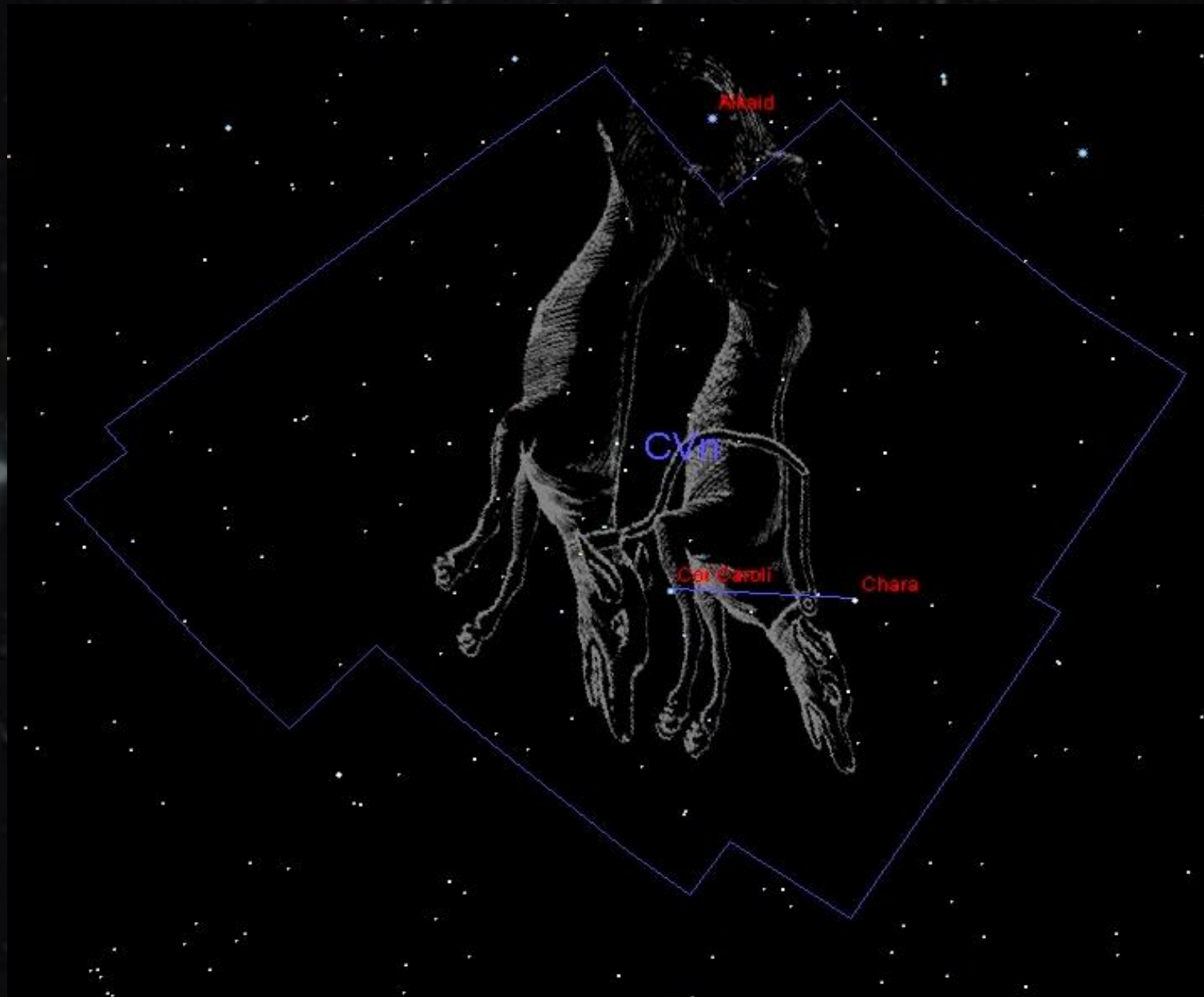


CANES  
VENATICI

## Forme de la constellation

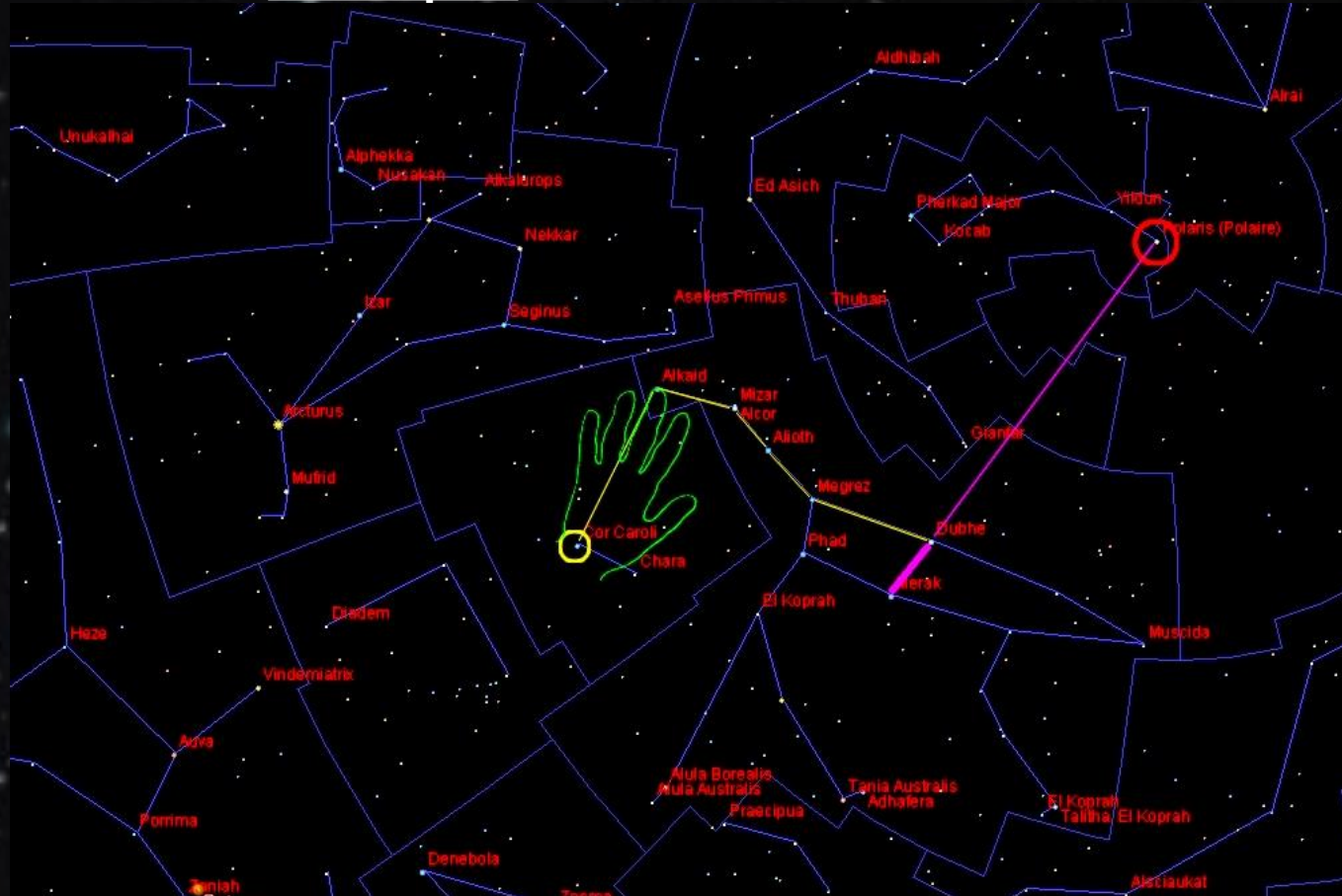


# Place dans la voûte céleste



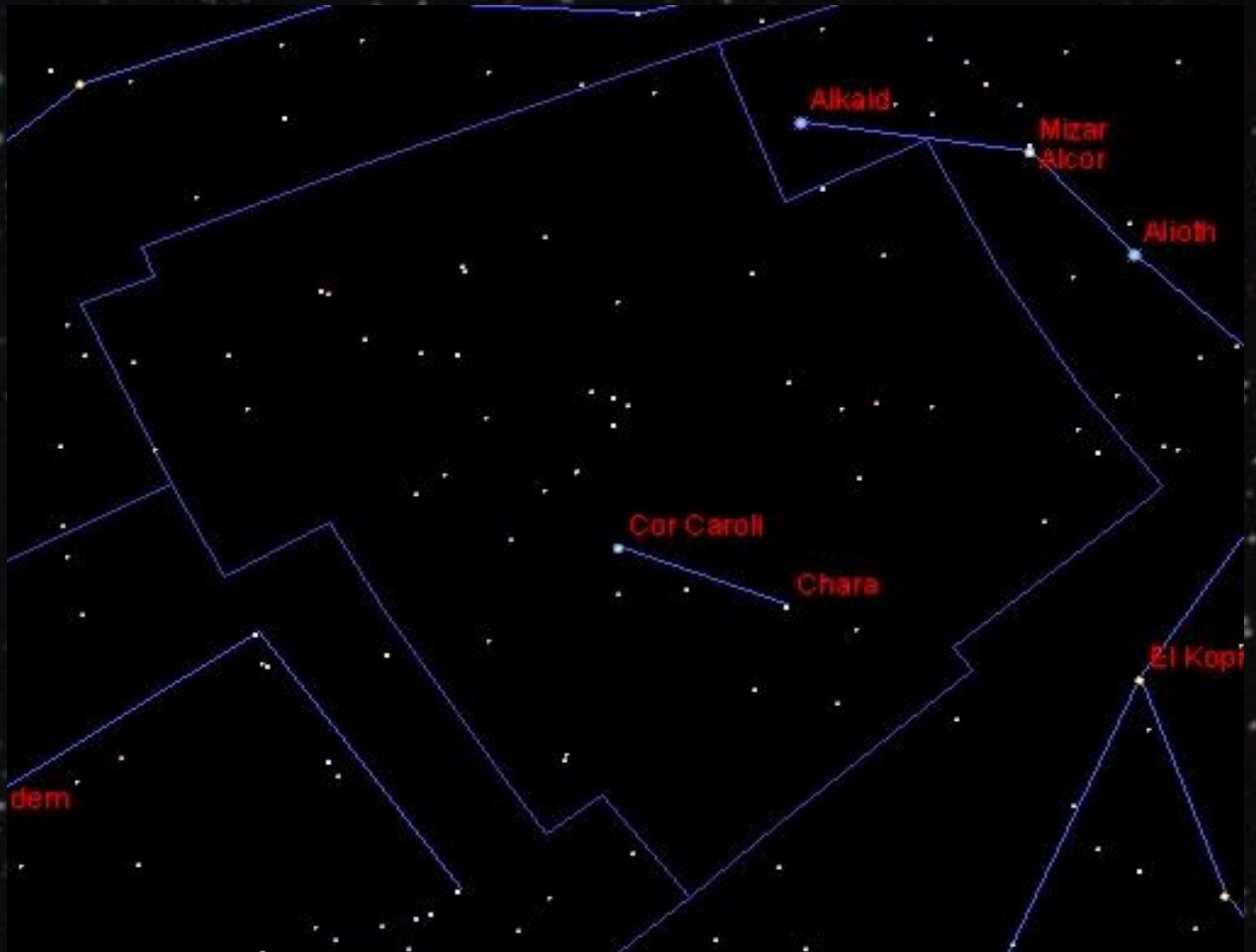


## Comment trouver Cassiopeia



Nous prendrons ursa major ,  
ursa minor comme constellations  
de référence et la main  
comme moyen de calcul  
de distance.

## Etoiles principales



## Etoiles principales

Cor Corali:

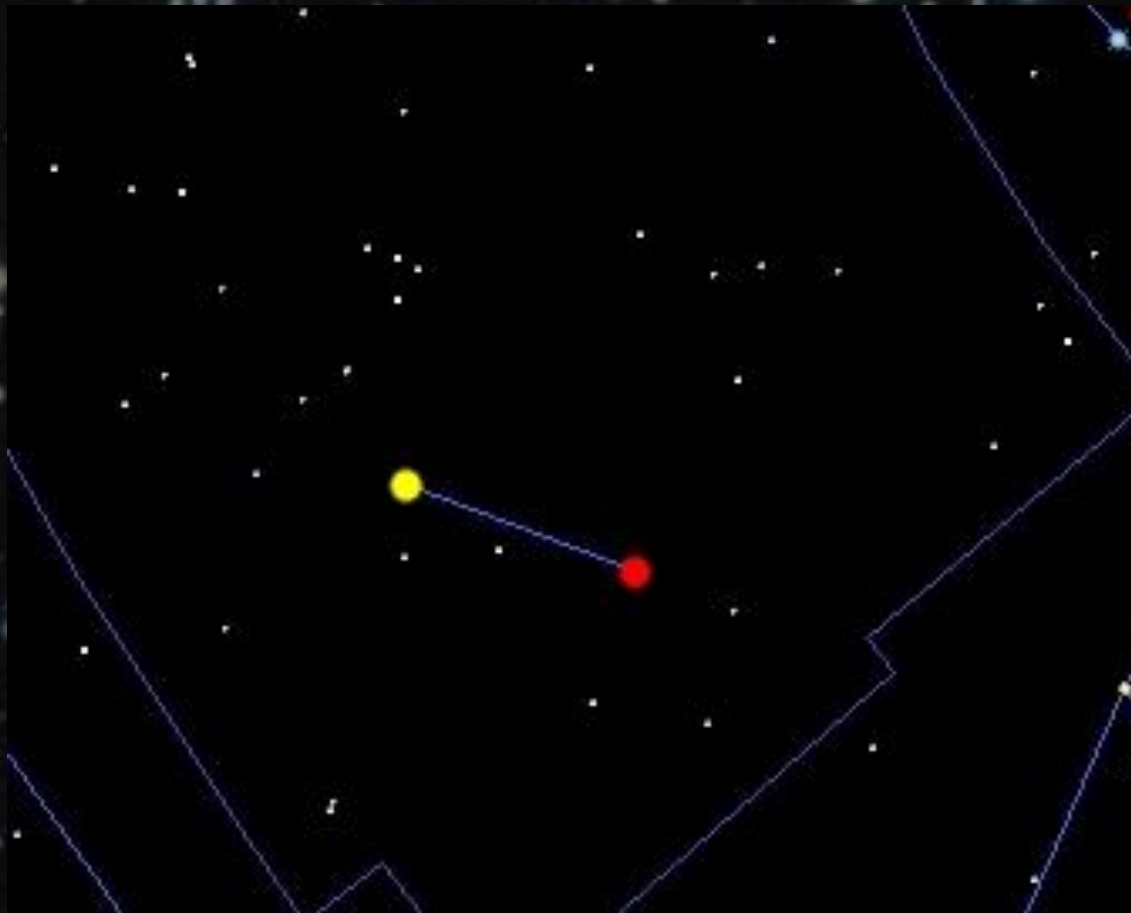
Chara:

Alpha

m :2,79

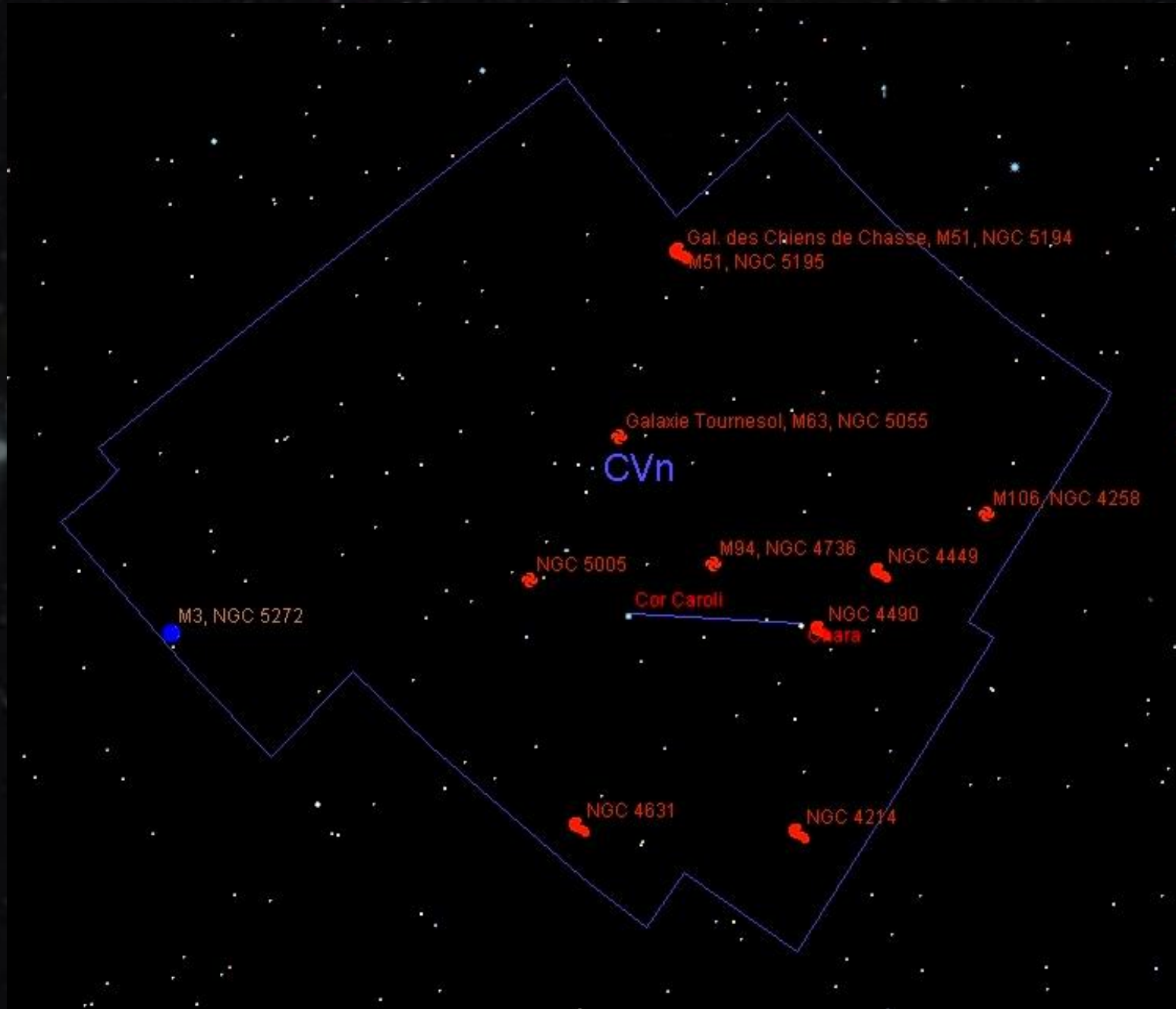
Beta

m :4,25





# Objets du ciel profond



## Objets du ciel profond

Amas globulaire : M3, NGC 5272      m:6,19      riche ,concentration moyenne

Galaxie :

M51,NGC 5195	m:9,63	spirale vue de face
M51,NGC 5194	m:8,38	irrégulière vue de face
M106,NGC 4258	m: 8,32	spirale barrée vue de $\frac{3}{4}$
M63,NGC 5055	m:8,57	spirale vue de face
M94,NGC 4736	m:8,17	spirale vue de face
NGC 4449	m:9,44	irrégulière
NGC 4490(4485)	m:9,76(11,96)	irrégulière
NGC 5005	m:9,82	spirale barrée vue de $\frac{3}{4}$
NGC 4214	m:9,7	irrégulière
NGC 4631	m:9,3	irrégulière

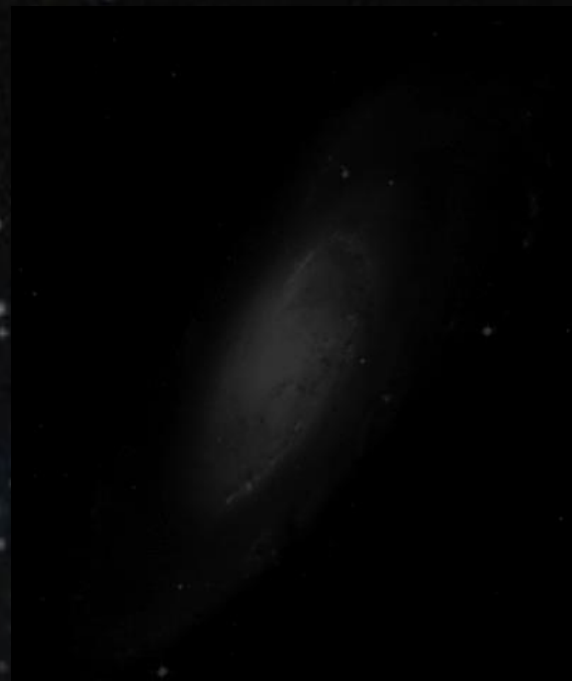




M3



M 51



M 106

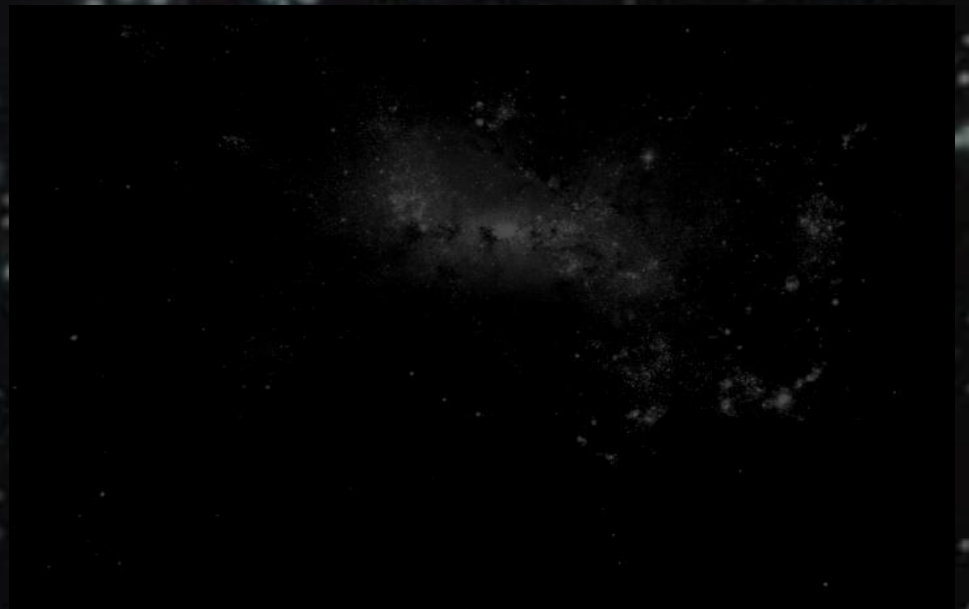


M 63





M 94



NGC 4449





NGC 4490



NGC  
5005



NGC  
4214



NGC  
4631

A dense field of stars, likely a star cluster or galaxy core, with the word "FIN" centered in the middle. The stars are of various colors, including blue, white, and yellow, and are scattered across a dark background. The word "FIN" is written in a bold, white, sans-serif font.

**FIN**